



STATELY ALBION

Residential Collection

stately-albion.co.uk



STATELY ALBION
— 60 Years —



2023 represents the sixtieth year of Stately-Albion producing homes. At first glance a simple statement. However, when we consider this for a moment it reveals the early struggles, significant fluctuations in trading and millions of hours of work to produce tens of thousands of homes.

We are proud of this achievement, a family owned company now in the third generation. Europe's longest established park home manufacturer.

We thank all our customers and staff for working with us to achieve this longevity. We also look forward to the opportunity to put this experience to use in building a quality home for you.

Looking forward to the next sixty years.

Contents

04 Tredegar Contemporary	08 Tredegar Elite	12 Goodwood	16 Hardwick	20 Badminton
24 Chartwell	28 Carmarthen	32 Chatsworth Gold	36 Cardigan	40 Woburn
44 Windsor	48 Wentwood	52 Kensington	56 Topaz	60 Tredegar Single
61 Chatsworth Silver Single	62 Wentwood Single	63 Chartwell Single	64 Chatsworth Crystal	65 Mayfair Single

“

*When it comes to experience in the park home industry,
no one can match Stately-Albion*

Tredegar Contemporary



The Tredegar park home range is one of our longest running and most popular home designs. The contemporary adds a modern feel to this timeless home, featuring our newly designed brick slips and flush gable, which are included as standard additions.

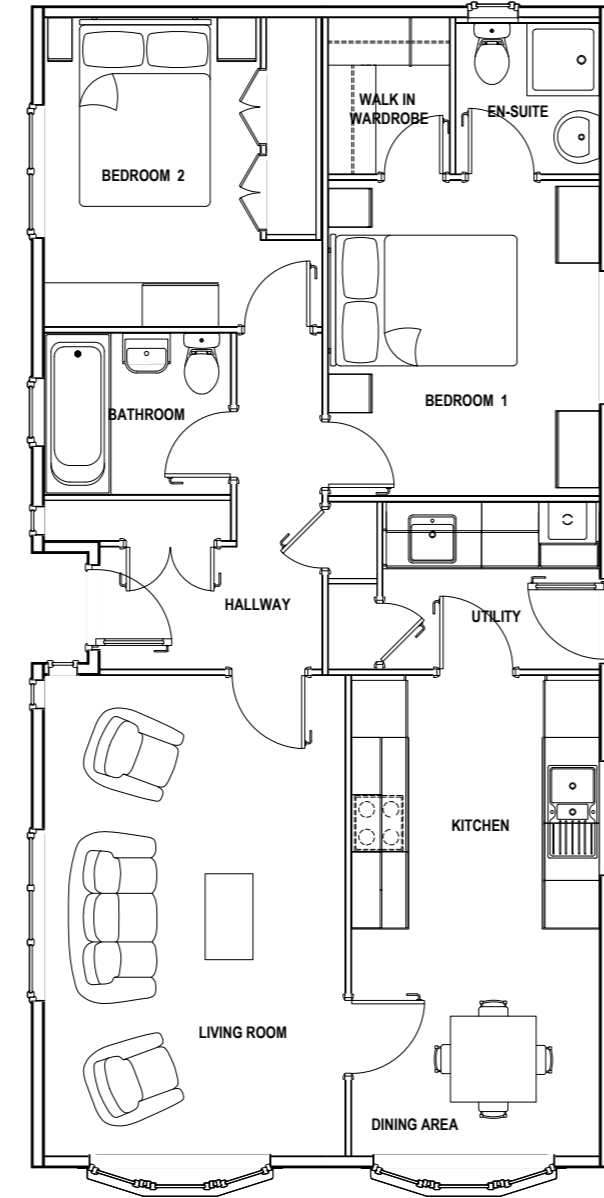
The kitchen takes the practical Tredegar park home design, but adds, tiling from the worktop to the underside of the top lockers, the option of high-gloss doors, integrated fridge/freezer, washing machine and dishwasher. The bedroom furniture has also been upgraded and allows you to choose from an extended range of colour and design options.

As with all Stately-Albion park homes, there's a wide range of options for you to choose from to help make your home special to you.





Tredegar Contemporary



*This is an example layout,
more are available upon request*



Tredegar Elite



In the spirit of Stately-Albion's ethos of continual development, a brand new model enters the fray in a blaze of double-barrelled glory.... Ladies and gentlemen, may we introduce the twin versions of the 'Tredegar Elite' – available in both traditional and modern variants.

The Tredegar has long been established as the bedrock that provides the foundation of the entire Stately range, and continues to offer exceptional value for money, especially with the introduction of the latest siblings.... twins, but not identical!

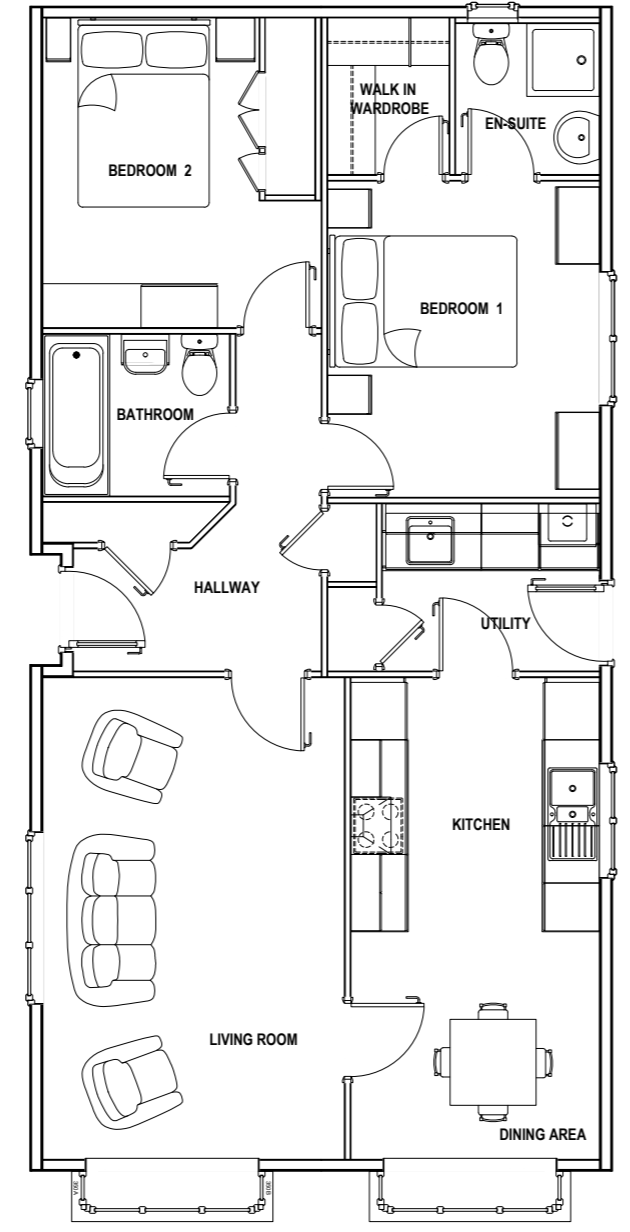


In order to offer customers a wider and more varied range, the Tredegar Elite steps in to provide a practical and well-equipped choice between traditional and modern – becoming the missing link in the Stately canon. Offering the same high spec of finish and appliances, the Elite can be ordered with either splay or box bays, establishing the model as the point where the designs – both traditional and modern – move away from one another and become very definite alternatives.

While the traditional, splay-bayed version is an obvious nod to the style that has served Stately and its customers so well for so many years, the modern, box-bay version falls into the newer, more contemporary group of homes such as the Windsor, Wentwood, Woburn and the brand-new, top-end Kensington, establishing a consistency of product and design throughout the range, fulfilling the expectations and demands of the modern customer and offering homes to appeal to every budget.



Tredegar Elite



*This is an example layout,
more are available upon request*



Goodwood



The New Goodwood is a staple in the Stately-Albion roster. After receiving its second face lift since its conception, it's easy to see why this home is so popular among our customers.

Feature cladding has been added to the exterior of the home, highlighting its stand out features. Compound bay windows, patio doors and the front door gable give you plenty of options for plot placement to take advantage of those stunning country landscapes. The spacious side lounge opens out into the kitchen/diner, allowing you plenty of space to entertain your guests. The kitchen has a sleek, modern feel with plenty of workspace, and a utility conveniently hidden away at the end.

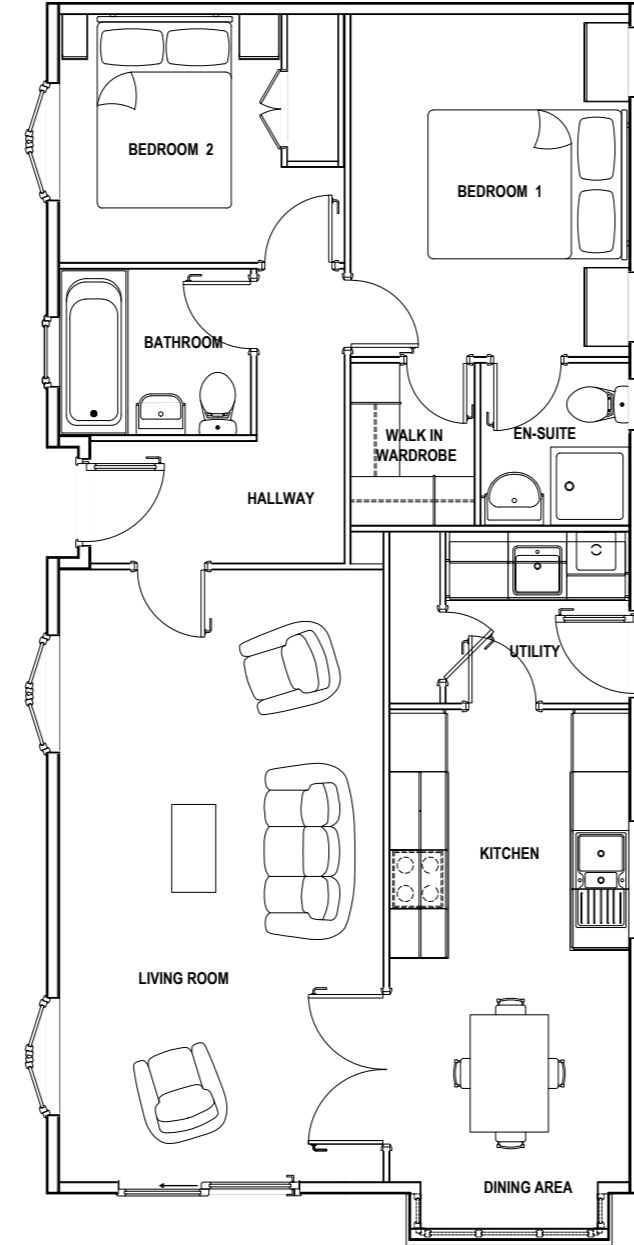


Each bedroom boasts excellent storage options, meaning you're never looking for extra space. The Master Bedroom offers a walk-in wardrobe and ensuite, adding another hint of luxury to this already lavish home.

The Goodwood's bathroom and ensuite have all modern amenities, while keeping the design simple. Relax and unwind in the spacious bath, taking in the luxurious details of your new home. This is an easily customisable home, giving you the chance to put your own spin on this classic model.



Goodwood



*This is an example layout,
more are available upon request*



Hardwick



The Hardwick joins the family of Contemporary stylish homes such as the Tredegar Elite and Goodwood.

The Hardwick Optimises this group of Budget conscious, light, elegant homes. Perfect for those who wish to put their own stamp on the design.

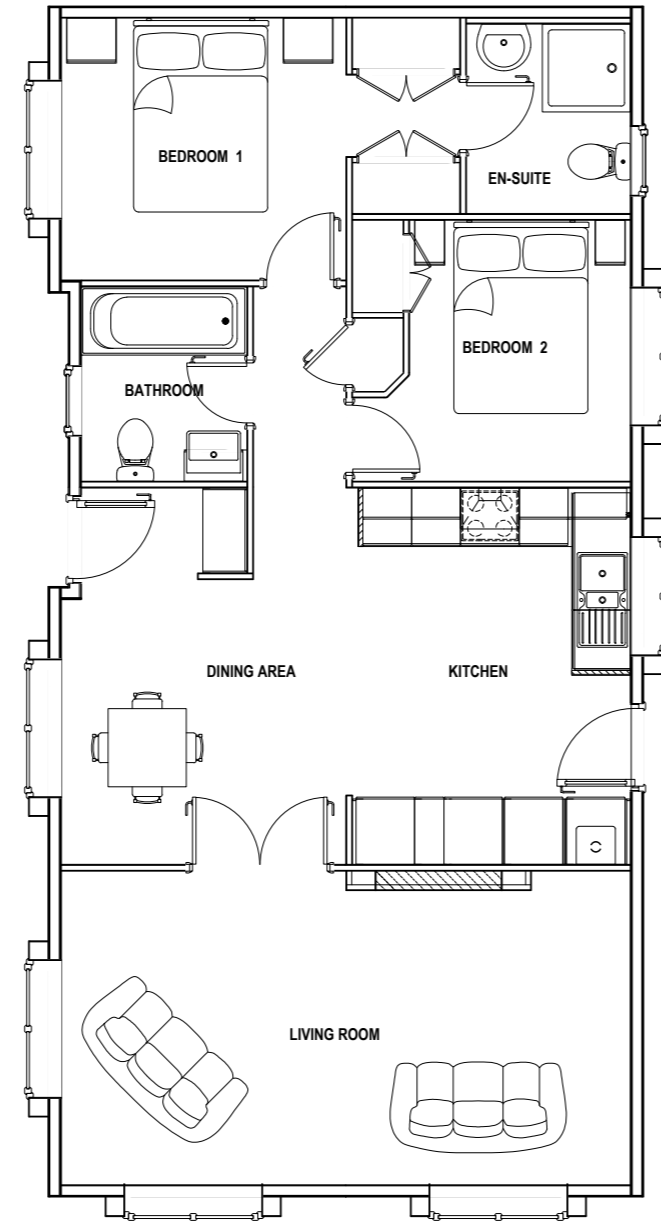
The exterior is a pleasing blend of Canaxel cladding and render giving clean lines to the large airy windows. Traditionally this is offered in greys with white windows, but other colour schemes are available.

The interior of the home reflects the well-equipped exterior styling. A large central well equipped kitchen/ diner is the heart of this two bedroom home. Allowing an ensuite bathroom, 2 bedrooms and a large lounge. Other layout options are available.





Hardwick



*This is an example layout,
more are available upon request*



Badminton



The Badminton is a remarkable home from its exterior to its interior. The covered front porch provides an alluring yet practical feature, along with its aesthetically placed cladding to the front door and window sections.

The Badminton's open plan lounge/diner maximises the potential for space, with an angled fireplace wall giving you an open walkway into the living area. This allows the home to work well in a variety of sizes, without reducing your living space.

The tall cabinet wall in the kitchen is certainly a crowd pleaser, with a high-level double oven placed conveniently in the centre of the units. You're never short of space for your kitchen essentials in the Badminton.

With your comfort in mind, our designers have allowed space for an ensuite and walk-in wardrobe to the Master Bedroom, and a spacious bathroom for your guests and the rest of the family. The bathroom boasts a large step-in bath and a stunning wall of mirrored cabinets, with elegant feature tiles giving an aspect of character to the room.

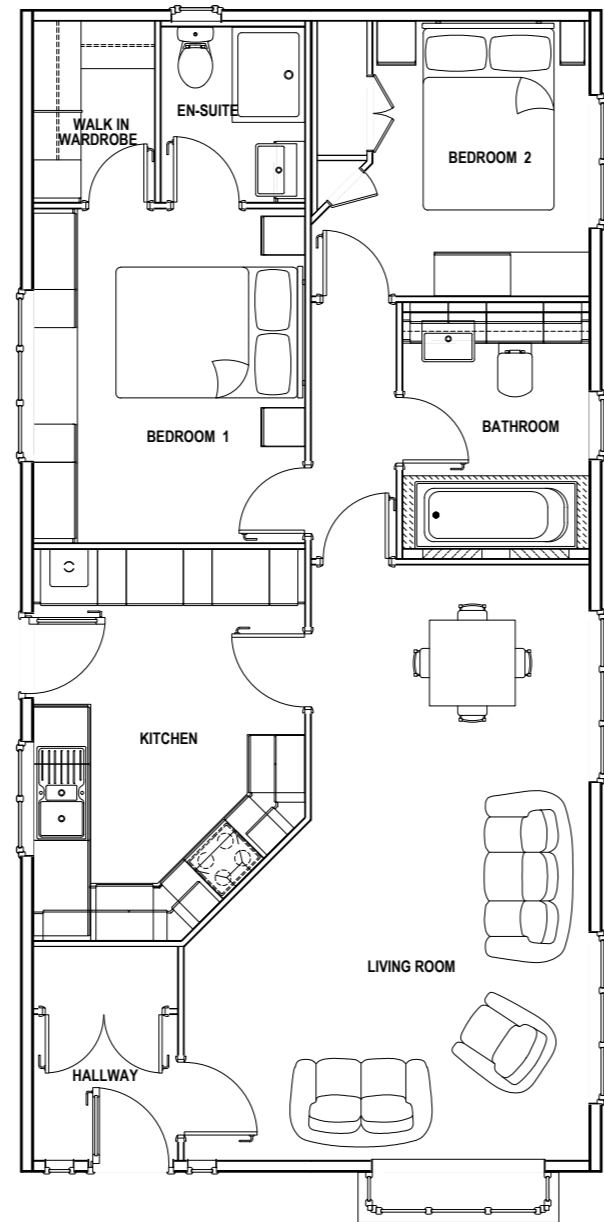
Both bedrooms possess ample storage options, from large wardrobes to a substantial set of drawers. Both rooms include dressing tables, giving them a romantic feel and a place to organise any essentials.

As with all stately homes, small customisations are welcome. Feel free to put your own spin on what is one of our most popular models.





Badminton



*This is an example layout,
more are available upon request*



Chartwell



Chartwell. A new concept in stylish contemporary country style living.

The distinct exterior has a lovely clean contemporary and practical finish. A blend of low maintenance materials with its large windows giving ample of light. A solid composite door compliments the elegant grey windows, neatly contrasting with the exterior finishes.

Inside the ingenious design offers a fully featured country style kitchen/diner unlike any other park home, our magnificent kitchen sits across the full width of the home. Giving the opportunity to bake those perfect cakes on the large Range style cooker. The central lounge is luxuriously appointed around the inglenook style fireplace made with reclaimed oak beam and shelves. A truly relaxed and comfortable atmosphere.

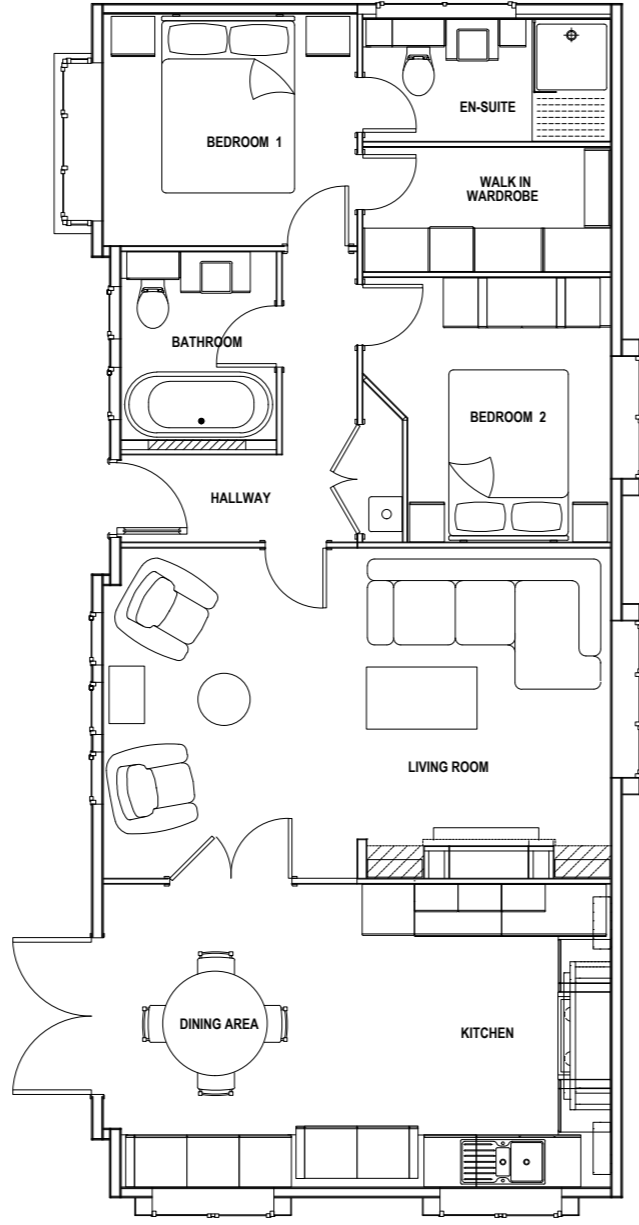
The bedrooms are a haven of relaxation and practicality, the master bedroom offering a large comfortable ensuite with a well-equipped walk-in wardrobe.

The Chartwell is a wonderful, comfortable, practical home providing the flexibility you require.

As with all our Stately homes changes may be made on request.



Chartwell



*This is an example layout,
more are available upon request*





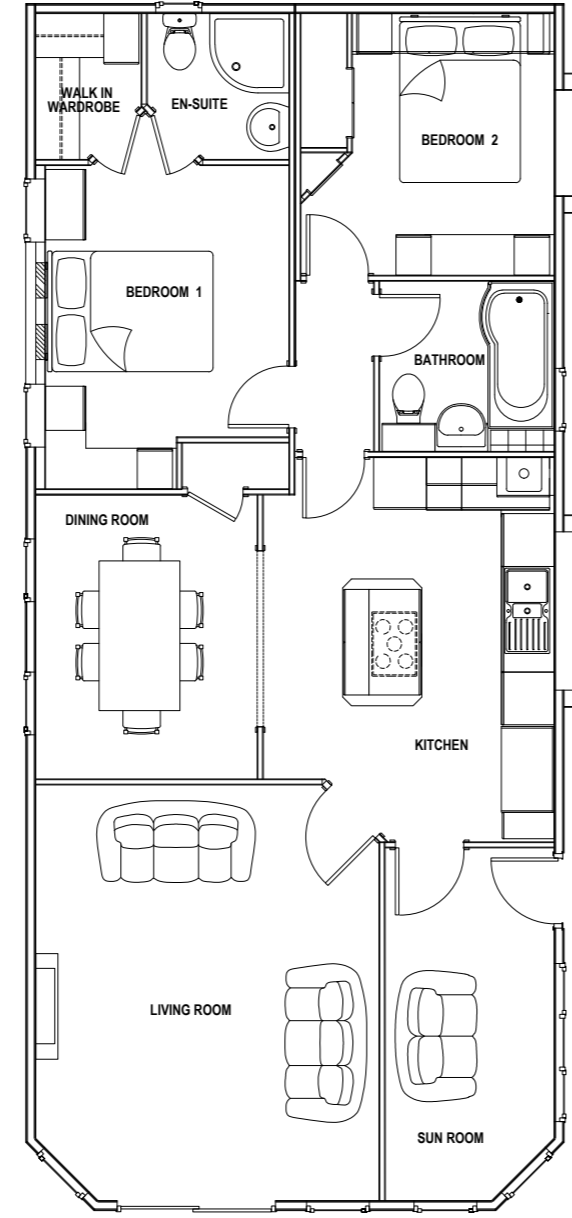
The Carmarthen park home with its integral sunroom is one of the latest additions to the Stately-Albion park home collection. By incorporating vaulted ceilings in the sunroom, lounge, diner and kitchen, we've made a light and airy living space. The sunroom, as you would imagine, has lots of glass and Velux windows, making it an ideal place to spend time - even if it's just watching the world go by!

As with all Stately-Albion park homes, there's a wide range of options for you to choose from to help make your home unique to you.





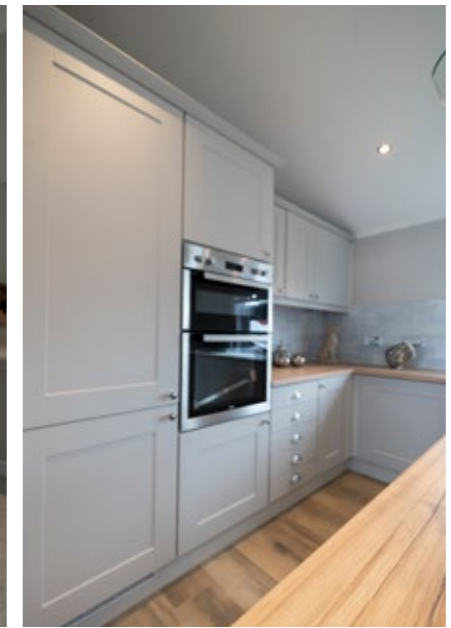
Carmarthen



*This is an example layout,
more are available upon request*



Chatsworth Gold



The Chatsworth Gold is a classic design long associated with Stately-Albion.

The Gold has an elegant design bringing light into the home.

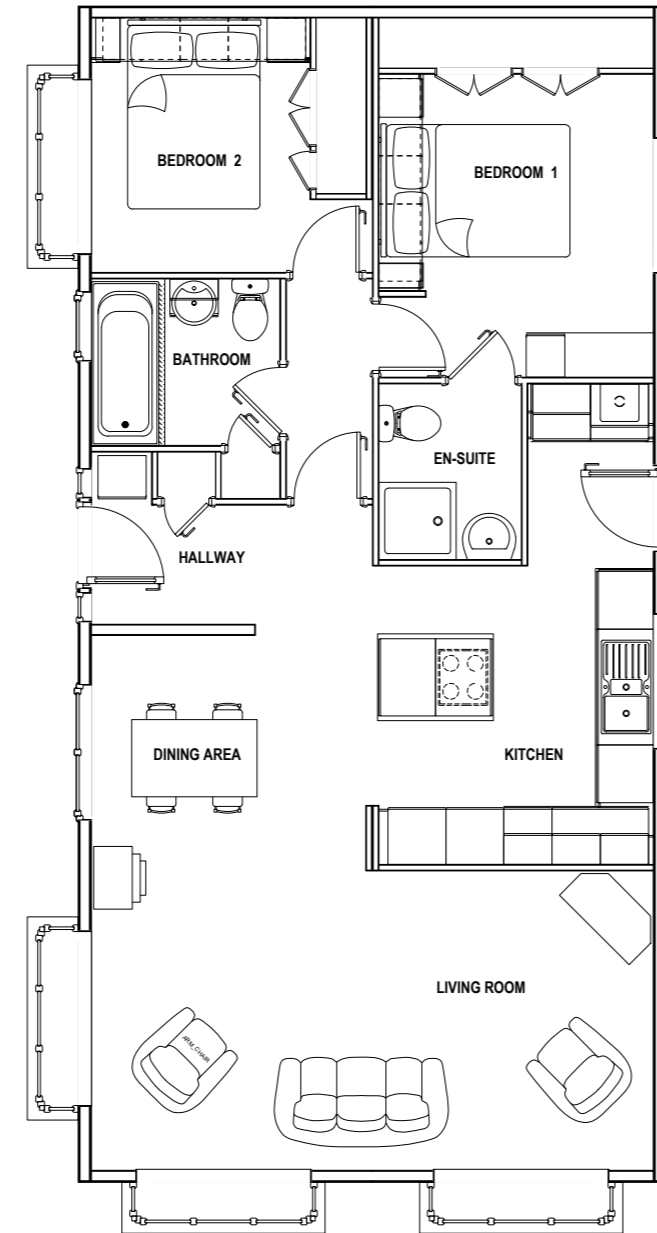
Externally the Gold benefits from two clad box bay windows to the side elevation and two to the front.

As with all Stately-Albion park homes, there's a wide range of options for you to choose from to help make your home unique to you.





Chatsworth Gold



*This is an example layout,
more are available upon request*



Cardigan



T rue to style the Cardigan Cottage takes inspiration from nature, loved for its wooden ceiling beams, classic wall panelling and floral prints, our cottage is truly a timeless charm.

Our beautifully designed open plan kitchen/diner's offers traditional solid and glazed cabinets, cottage range style cooker with matching stainless-steel hood, simple wood effect butcher block worktops and laminate floors finishing with a farmhouse style table.

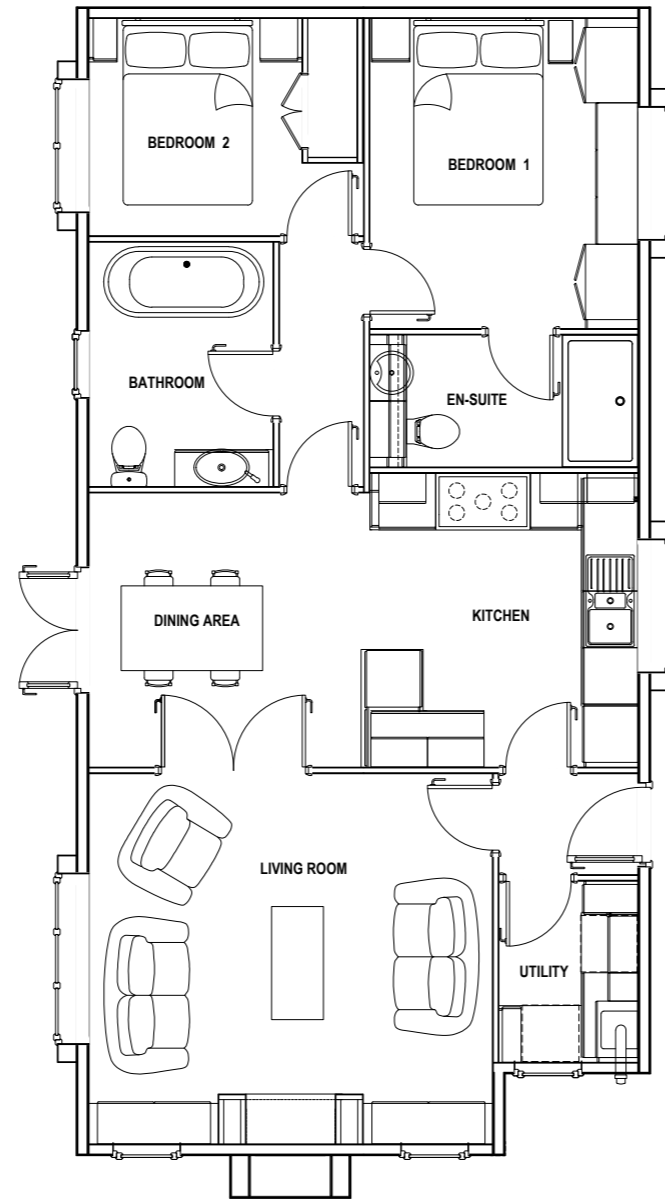
The master bedroom feels homely and welcoming. Small feminine touches give's this room its calming sweet mood artfully applied to the main feature window seat with built ottoman storage to the centre of 'his and her' wardrobes, the new bedroom layout offers ample amount of space around the bed onto your personal luxurious en-suite with large shower enclosure.

Maintaining the character of the cottage the bathroom the roll-top bath is an iconic piece that adds authentic appeal. With its sweeping curves and ornate feet, this bath is a classic luxury fitting set on a stone effect wall. If there's one thing a cottage living room can't be without it's a living room fireplace. The cosy heart of the room which everyone gravitates towards, what could be better than curling up on not one but two window seats with a nice cup of tea whilst you take in views of your surroundings.

'If it's not cosy, then it's not a cottage!'



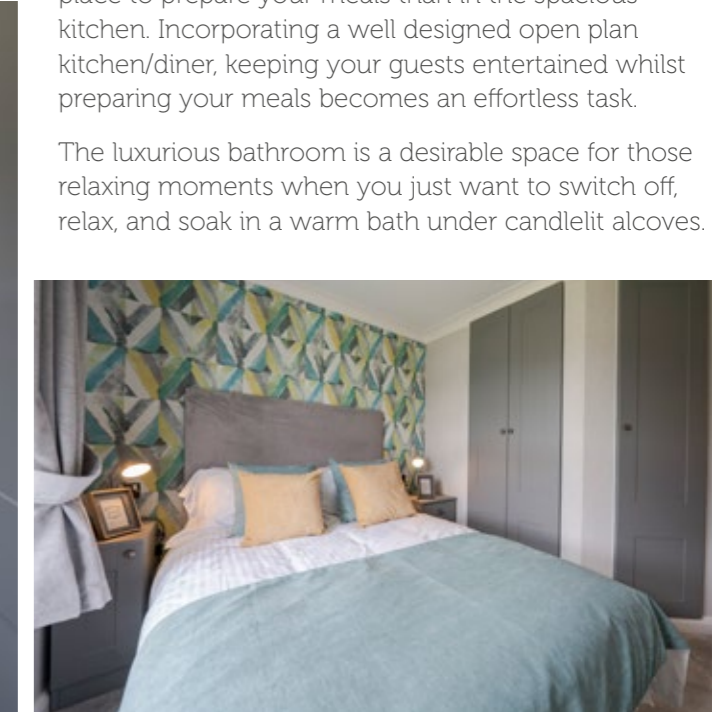
Cardigan



*This is an example layout,
more are available upon request*



Woburn



Unveiled for the very first time at the 2014 National Park and Holiday Home Show, Newbury, we were proud to have exhibited the latest addition to our Residential Park Home range, The Woburn.

Within the first few days of being in the public limelight, the new Woburn won many orders. A great testament to its aesthetically pleasing design and well thought out use of space.

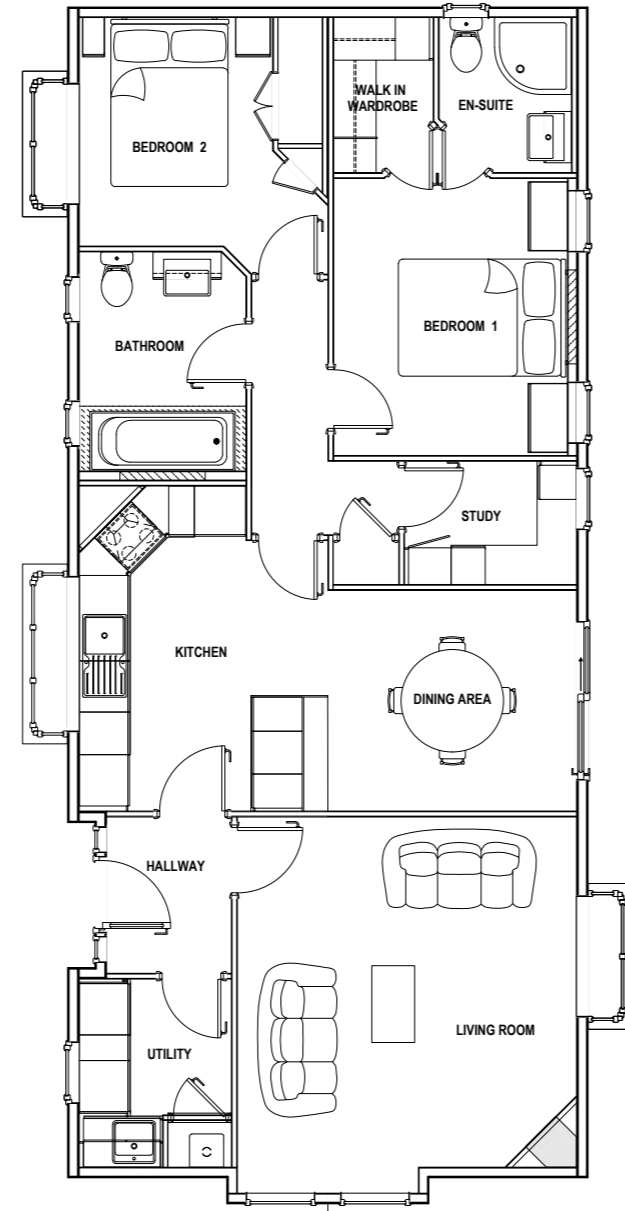
Externally, the Woburn is striking with its box bays and inset front door, complemented with feature cladding to emphasise its modern angular shapes.

If fine cuisine is to your liking, then there's no better place to prepare your meals than in the spacious kitchen. Incorporating a well designed open plan kitchen/diner, keeping your guests entertained whilst preparing your meals becomes an effortless task.

The luxurious bathroom is a desirable space for those relaxing moments when you just want to switch off, relax, and soak in a warm bath under candlelit alcoves.



Woburn



*This is an example layout,
more are available upon request*



Windsor



The Windsor, a name with a long and fruitful history among the Stately-Albion collection of park homes, has been re-imagined to meet the needs of today's park home lifestyle.

From the exterior, the Windsor is certainly something to be admired. Its features benefit from a combination of render and cladding which help to emphasise the bay windows. Combine that with decorative corner brick stones and the feature clad gable complete with diamond window, the Windsor park home is sure to charm those who set their eyes on it.

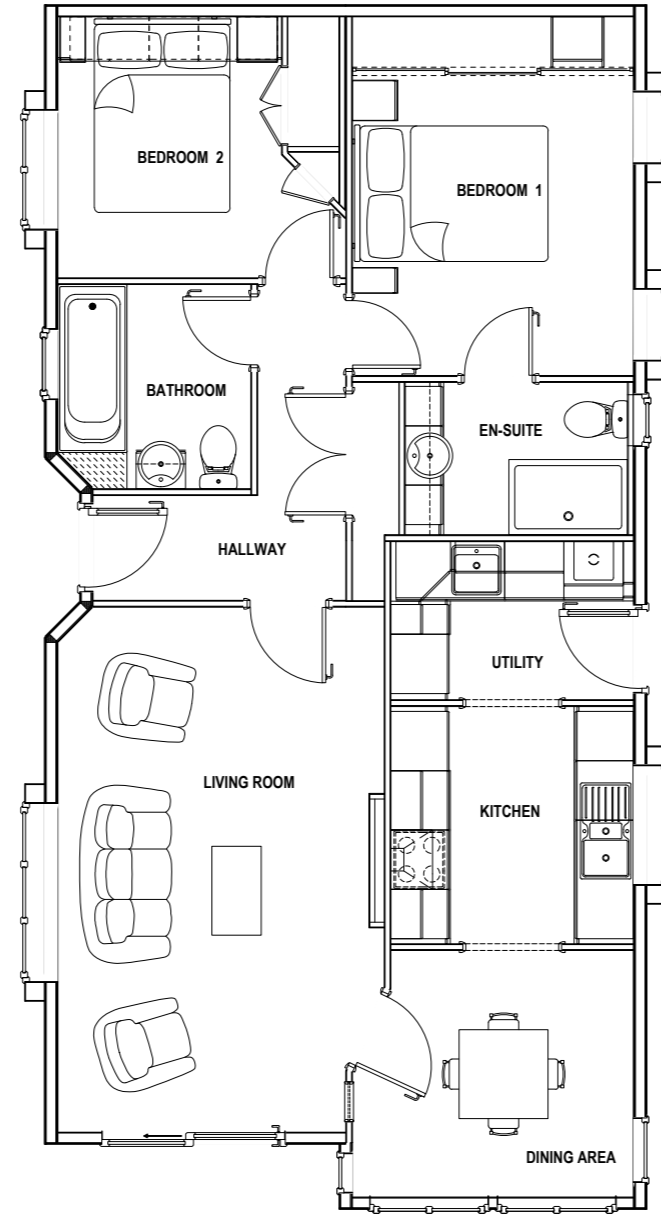
Light streams into the dining room via the large fully glazed walk-in bay. Vaulted ceilings to the lounge, diner and kitchen, create a desirable and spacious atmosphere in the home. If luxury is on your agenda, then the fully tiled bathroom and en-suite are sure to please you.

As with all Stately-Albion park homes, there are a wide range of options for you to choose from designed to help make your home unique to you.





Windsor



*This is an example layout,
more are available upon request*



Wentwood



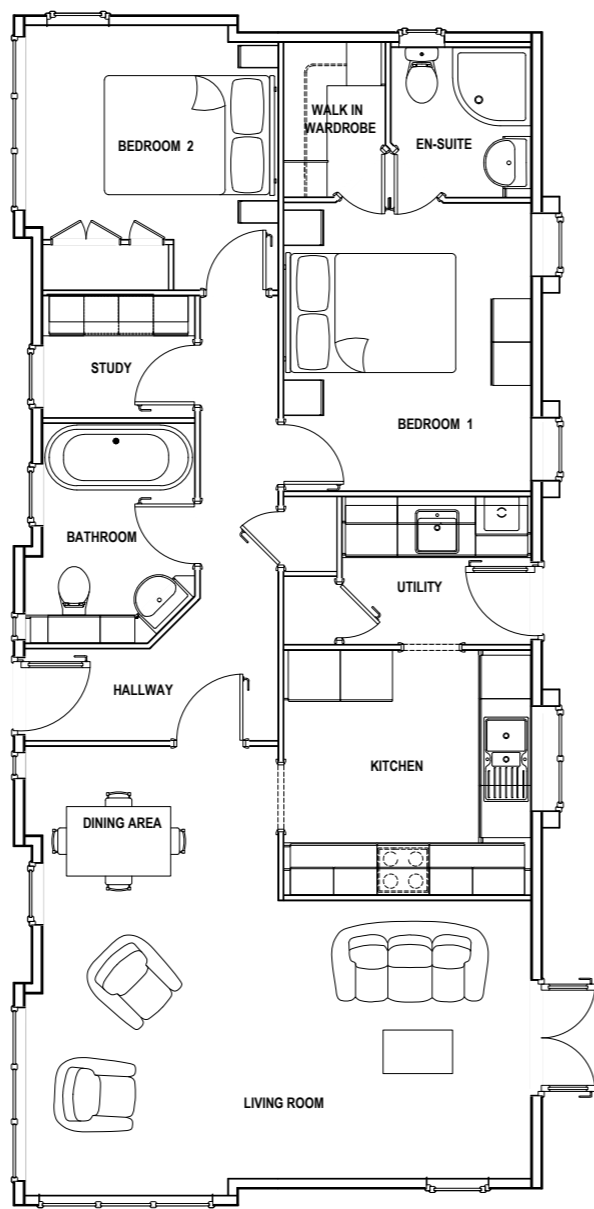
Fresh from its newest renovation, the Wentwood has everything you need for contemporary living. The fireplace in the lounge is finished with panelling, giving you a gorgeous standout feature that is sure to impress your guests. With an open plan lounge/diner and grand vaulted ceilings, you have the plenty of space to entertain or to unwind and enjoy your home. The kitchen offers feature top cabinets, allowing you to bring a pop of colour into this state-of-the-art home. Ample counter space and versatile storage options make this kitchen a must have for couples and families alike.

As with most Stately homes, the Master Bedroom comes complete with a walk-in wardrobe and ensuite. The tasteful styling for the Master Bedroom is carried through into these rooms, giving you a cohesive and charming set up.

The bathroom continues the modern approach, while bringing in some classic elements such as the roll top bath. The large windows make the room light and airy, giving you the space to relax in opulence and bliss. The study carries on the modern styling, perfect for anyone who needs a space to shut off from a busy family life and focus on their work. If a study isn't for you, this can be converted into a small bedroom for guests or any new arrivals on the horizon. The choice is yours!



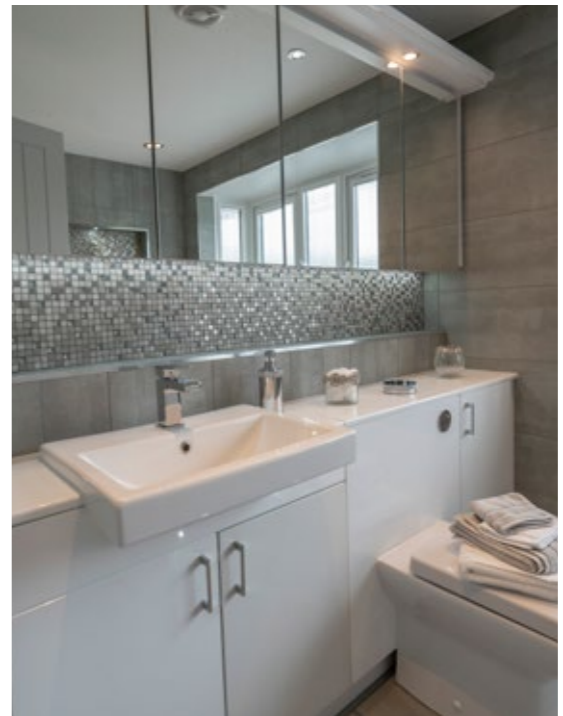
Wentwood



*This is an example layout,
more are available upon request*



Kensington



Establishing itself as the flagship of the latest modern line, The Kensington is the perfect blend of striking style and practicality within the Stately-Albion range. Offering magnificent cathedral style windows and vaulted ceilings providing a light and airy atmosphere appealing to our contemporary customer-base. Eye-catching and opulent this home makes a beautiful high-end statement by its sheer presence and beauty, while using leading-edge features to ensure that no inch of space is wasted, including a walk-in wardrobe and ensuite in the master bedroom, adding to its impressive ambience.

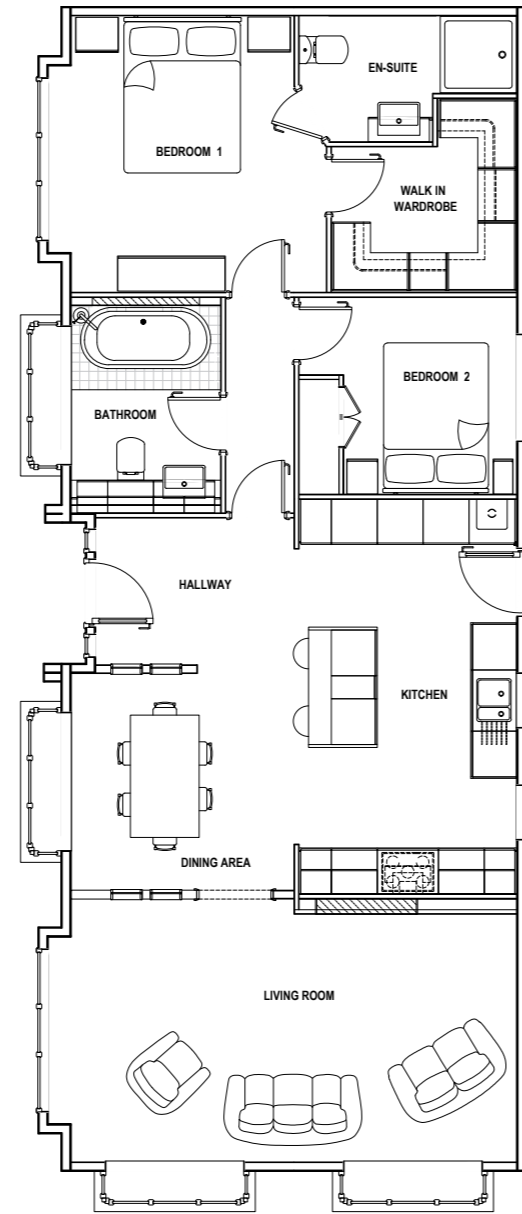
Launched at the 2016 Newbury Show, the Kensington rivals the long-established 'Topaz' for grandeur and modern design, while offering an exquisitely equipped designer kitchen-diner, spacious lounge with gorgeous inset fireplace and a fully tiled family bathroom that offers ultra-modern dynamic features.

The impressive exterior of the home incorporates dual roof dormers, boxed-out windows and a front door boarded by two columns all of which benefit from CanExel cladding detail and contributes to its unmistakable curb appeal. The Kensington is the perfect home for those looking for high-end luxury, combined with contemporary and modern design.



Option A

Kensington



*This is an example layout,
more are available upon request*



Option B



The main living space in the Topaz park home range is centred around the large and alluring kitchen. With it's central island, Range cooker and mantel above, the kitchen boasts functionality and yet is enchanting at the same time.

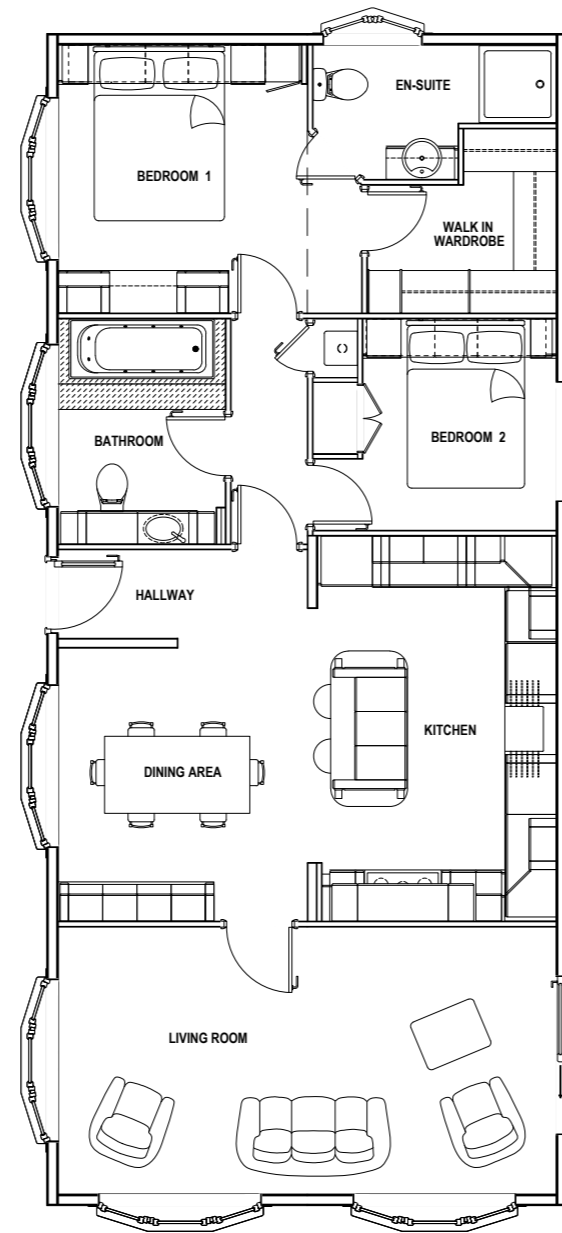
The limelight shines down on the bathroom in the Topaz with its signature vanity unit and step-up bath. With a bathroom of this magnitude, you'll be sure to make splash!

As with all Stately-Albion park homes, there's a wide range of options for you to choose from to help make your home special to you.





Topaz



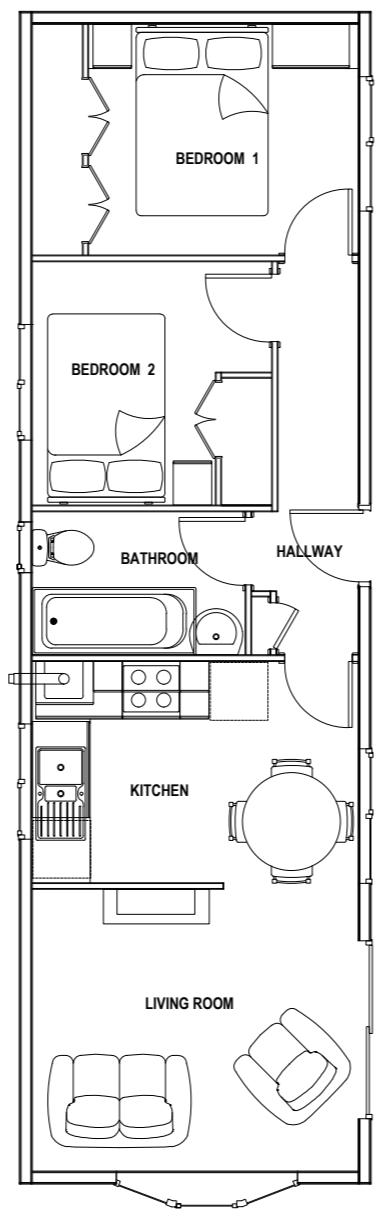
*This is an example layout,
more are available upon request*



Tredegar Single



Tredegar Single

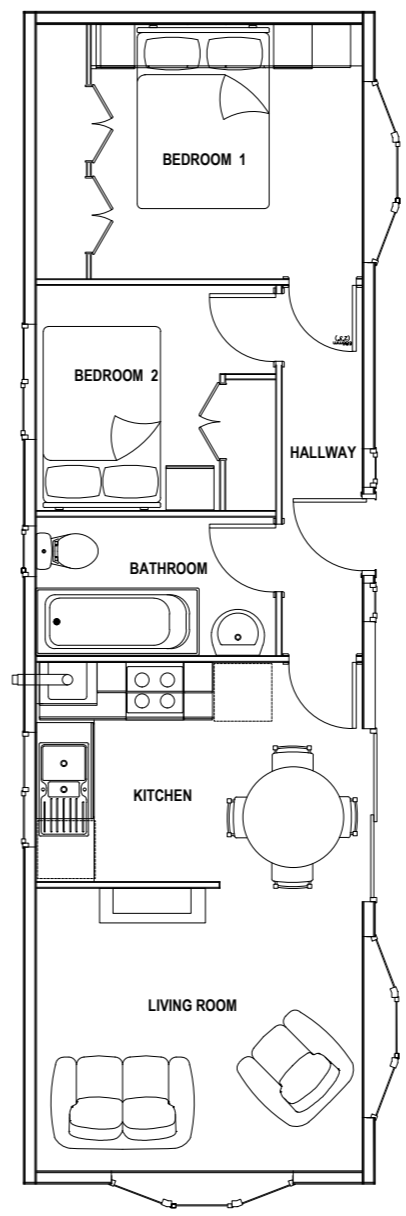


This is an example layout, more are available upon request

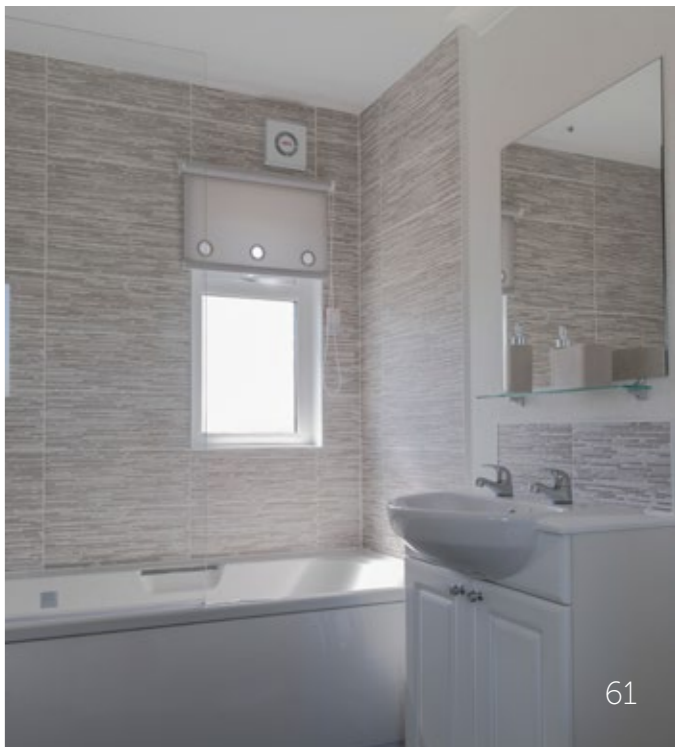
Chatsworth Silver Single



Chatsworth Silver Single



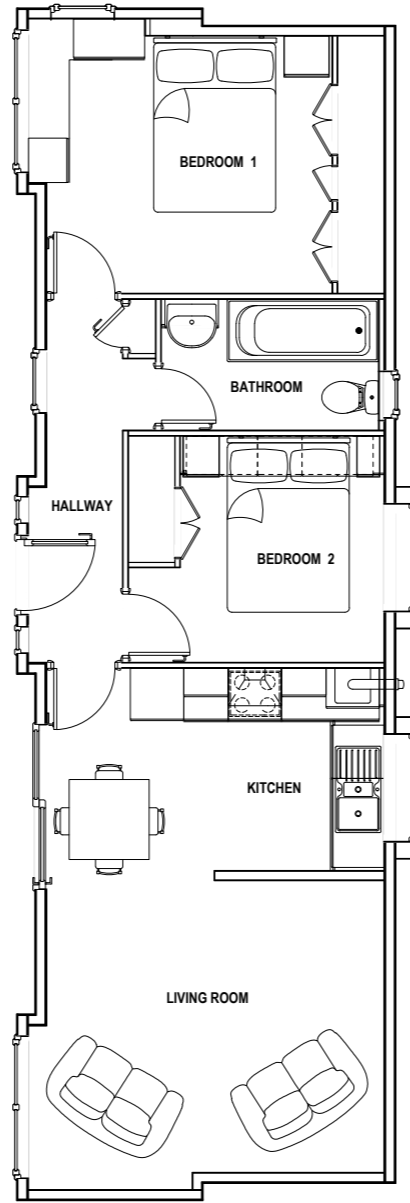
This is an example layout, more are available upon request



Wentwood Single



Wentwood Single

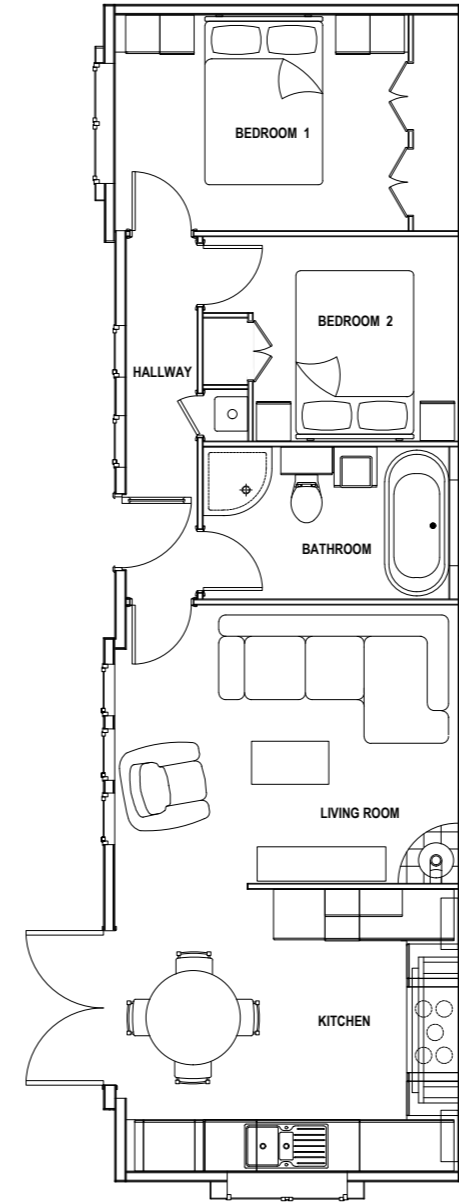


This is an example layout, more are available upon request

Chartwell Single



Chartwell Single



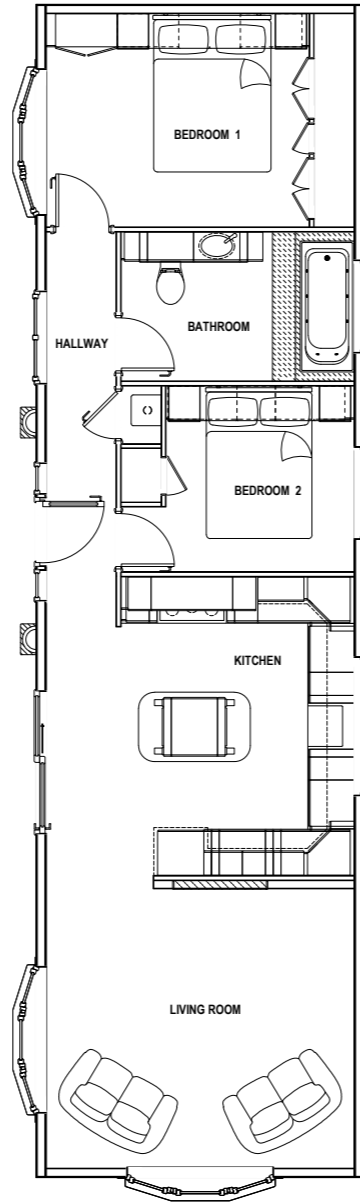
This is an example layout, more are available upon request



Chatsworth Crystal



Chatsworth Crystal

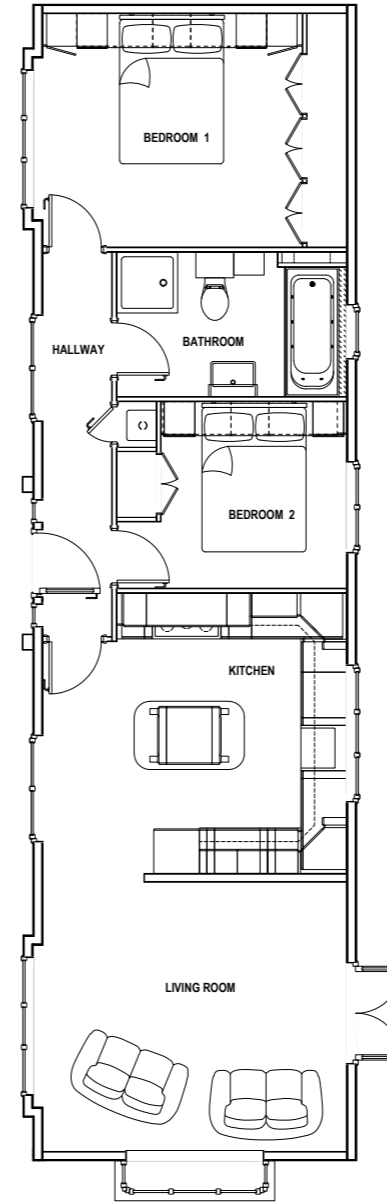


This is an example layout, more are available upon request

Mayfair Single



Mayfair Single



This is an example layout, more are available upon request



Leisure Homes

Although Stately are notable for their range of residential homes, we also have a great range of contemporary and stylish leisure homes. All designs and specifications are available upon request.



Stately are particularly aware that we are building your home. To maximise your comfort's, speak to your park operator and we will be happy to assist in modifying your plan to suit your own requirements.

- Interior colour schemes
- Want a shower, a bath, or even both?
- Utility room
- Waterproof tv in your bathroom
- Tv alcove to your wall
- Sockets in all the right places
- Larger / smaller rooms to suit you
- Tiled, laminate, or LVT flooring

Now is your opportunity. Please feel free to contact our sales team with any queries you may have.

Sales@stately-albion.co.uk

Stately have the right to alter products and specification without prior notice



Stately-Albion Ltd. Prince of Wales Industrial Estate, Abercarn, Newport, NP11 5AR

Tel: 01495 244472 | Email: sales@stately-albion.co.uk

stately-albion.co.uk