

The Pembroke

An intelligent approach to the layout and overall flow of the furnishings and fittings create a remarkable sense of space with an elegant and aesthetically pleasing atmosphere



A modern stylish home the Pembroke has vaulted ceilings to the lounge, diner and kitchen giving the owner a wonderful feeling of space. Using a new range of window design, including velux windows to the roof in the lounge, to amplify the illusion of extra room.

The spacious lounge, with an attractive chaise longue suite, wall unit and coffee table, has a feature window which allows viewing into the dining area. Portico sliding doors separate the dining room from the modern kitchen, which has all the appliances you could wish for to make your life easier.

The cleverly designed computing area will accommodate all your requirements with regards to your technical equipment. The family bathroom with its tiled walls, has a desirable opula bath for your comfort, and a vanity unit with a stylish hand basin. The bright and spacious second bedroom has ample wardrobe and drawers, with hat lockers for that extra storage. The master bedroom has the unusual feature of a dressing room, which in turn leads into the fully tiled ensuite, also complete with a modern vanity unit and quadrant shower cubicle. The new soft furnishing package completes this stylish home.

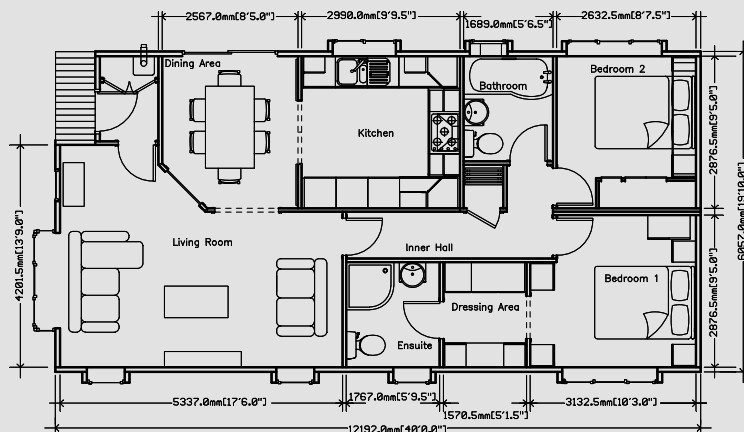


The Pembroke meets the needs of the most discerning customers who want nothing but exceptional value.



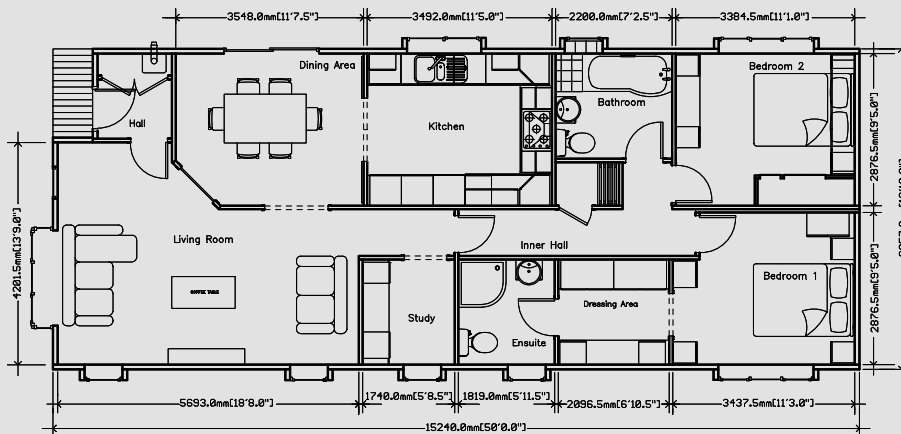


The Pembroke 40 x 20





The Pembroke 50 x 20



An example layout, more layouts available upon request